

2: Twist and Turn Thread Catcher



Slide 2: For those of you who enjoy hand stitching – or crochet/knitting, for that matter – this little “Twist and Turn” thread catcher is ideal. Put your threads in it while you’re sewing and then twist it closed until you get chance to empty it. The instructions explain how to make a plain version, but as you can see below, you can easily decorate it with applique, embroidery or another suitable technique.



Slide 3: To give you an idea of size, the finished diameter is about 7cm.

Materials and tools needed:

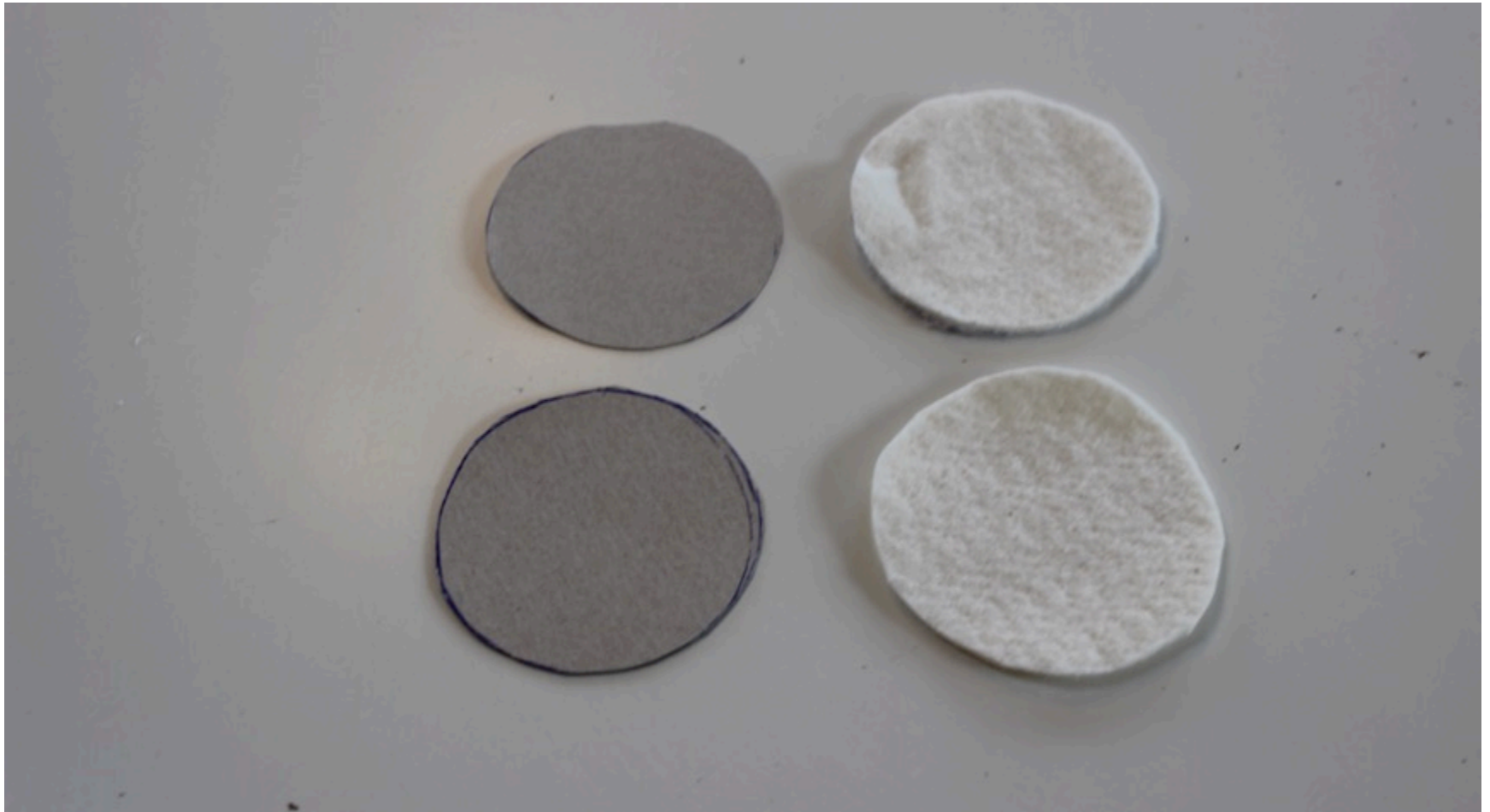
- A “Pringles” tube
- 2 offcuts of wadding approx. 10cm x 10cm
- Cardboard such as a cereal box
- About 25 x 30cm of woven cotton **fabric*** PLUS two pieces about 10cm square

TOOLS:

- A “Stanley” or craft knife
- A compass might help...

(Patchwork or shirt weight fabric)*

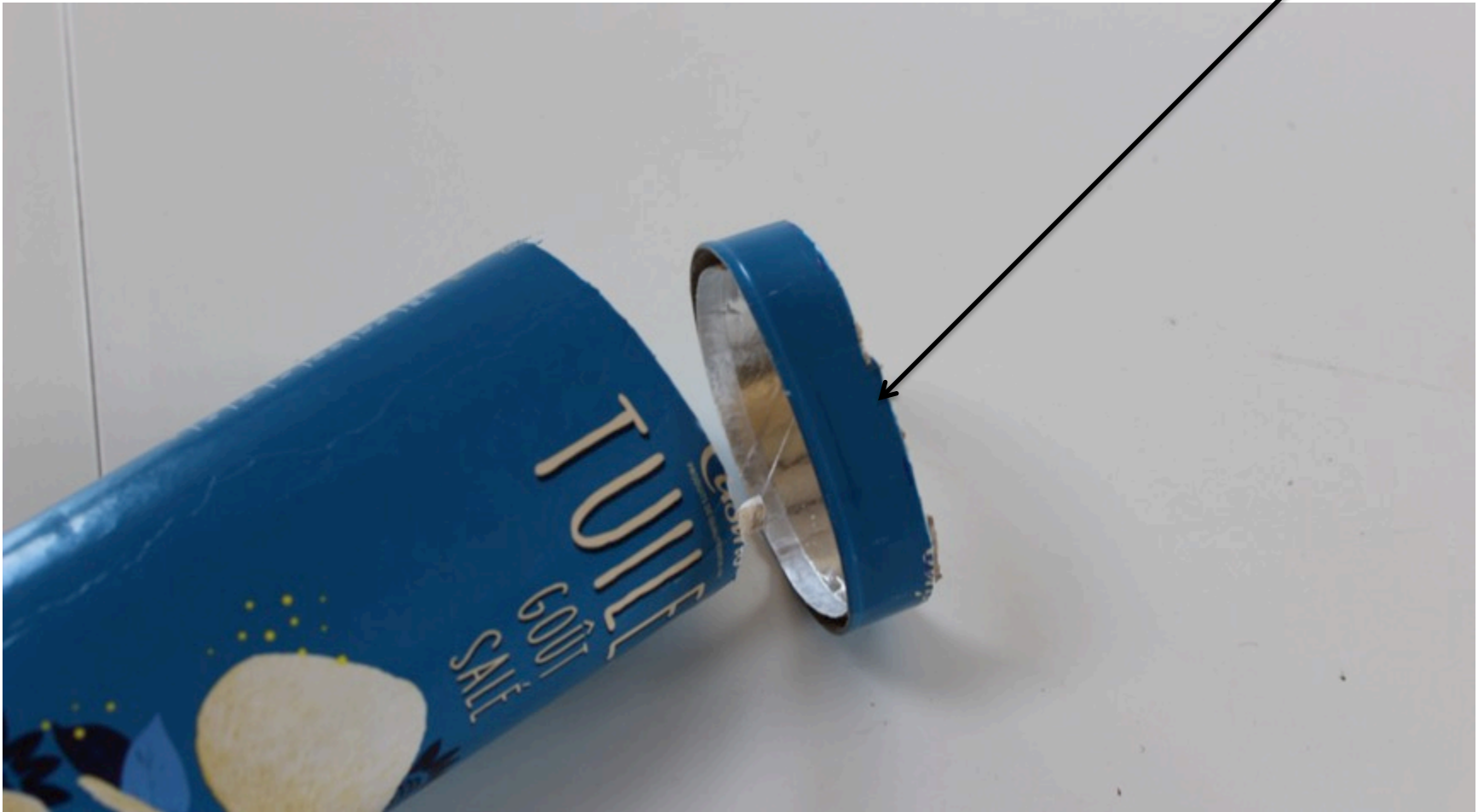
Slide 4: Cut two pieces of cardboard **6.8cm** in diameter. Unfortunately, this has to be fairly precise! Cut out two pieces of wadding the same size.



Slide 5: Cut two pieces of fabric about approx. 9cm in diameter than the cardboard and wadding. **If you want to decorate your thread catcher, decorate one piece of fabric at this stage – before cutting out the circle. See slide 31.**



Slide 6: Using your craft knife, cut a section of the Pringles tube approx. 1.5cm deep. **Please be careful!**



Slide 7: Cut a rectangle of fabric **26cm x 21cm**.

Press 1cm to the Wrong Side (W.S.) along each long edge.



Slide 8: Take a hand sewing needle and thread – double – and knot the end securely. Then stitch running stitches around the outer edge of one of the fabric circles >>>



Slide 9: Pull this gathering thread very slightly so the fabric starts to curl upwards and place a disc of wadding inside.



Slide 10: Place a cardboard disc on top.



Slide 11: Now pull the gathering thread tightly, so it hugs the edge of the cardboard/wadding like this. Secure and then cut the thread.



Slide 12: Repeat with the other fabric circle, cardboard and wadding discs. When they're both complete they look like this on one side (the Right Side) and this on the other side (the Wrong Side).



Slide 13: Place these two discs Wrong Sides together and hand stitch them together, stitching around the edge as shown.



Slide 14: This photo shows what they look like once this is complete.



Slide 15: Stitch the two shorter sides of your fabric together using a **1cm seam allowance**. Sew right to each end of the fabric, unfolding the part you pressed under earlier. Press the seam allowance open >>>



Slide 16: A sleeve board or seam roll helps, but if you don't have either of these, roll up a towel to make a mini ironing board! Press the 1cm you pressed at the start back under, at both sides.



Slide 17: Slip the circle cut from the Pringles tube over your fabric like this.



Slide 18: Pull one side of the fabric down over the other, enclosing the cardboard, until the ends meet >>>



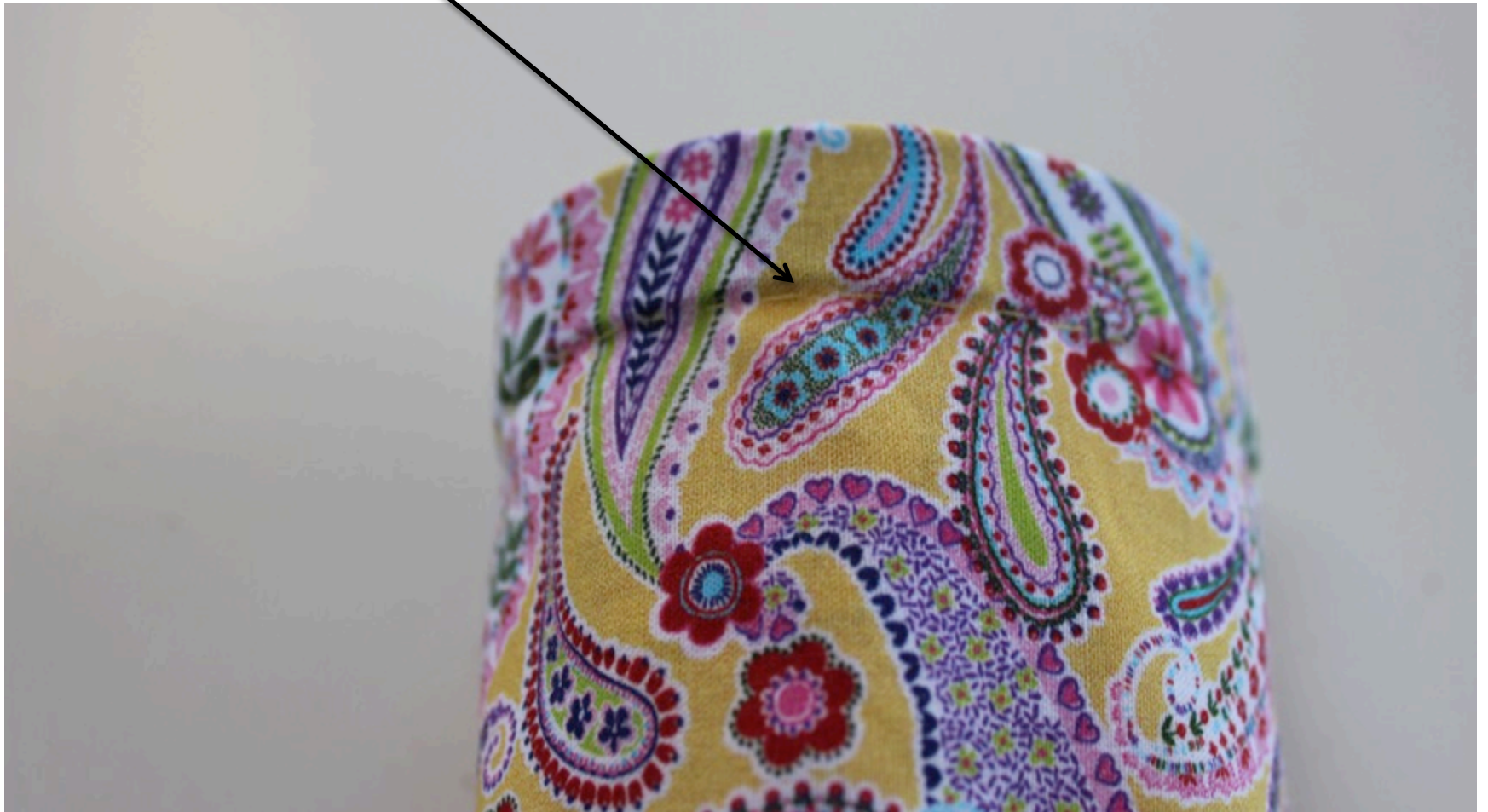
Slide 19: Pin the two edges together like this.



Slide 20: Push the cardboard circle right up to the fold and pin to hold it there. Now carefully stitch (here) where these pins are, to keep the card up at the top. You'll see the stitches so use a matching thread. See >>>



Slide 21: Here are the stitches – you'll need to remove the pins as you go.



Slide 22: Pull one end of the fabric through as shown.



Slide 23: Then slip your stitched fabric disc into the fabric as show here.

If you've decorated one side, place this side on the INSIDE.



Slide 24: Pin it in place – yes, it's fiddly! Make sure the seam allowances on the fabric stay turned to the inside. You might need to ever so slightly ease in the fullness.



Slide 25: Now carefully slipstitch this in place as shown.



Slide 26: Now push the bottom circle through the card ring to the other side, ready to sew the final edge.



Slide 27: Pin and then slipstitch in place, as before.



Slide 28: So, here is your finished “Twist and Turn” thread catcher.



Slide 29: As if by magic, it stands upright, waiting for you to put your threads in. Then, trap them in place by gently twisting it closed. How? Well >>>



Slide 30: Simply twist it...and then push the base into the card circle. You'll probably need to twist and close, twist and close 2-3 times before it will work smoothly.



Slide 31: If you like EPP patchwork, you could decorate the end piece with mini hexagons. Alternatively, you could decorate it with hand or machine embroidery.



Slide 32: This is what that one looks like when it's finished.



Slide 33: On my jade green one, I added a loop of ribbon, so it can be clipped onto my sewing bag. It's just hand sewn in place, here.



Slide 34:

